

The Organization

Houtbuigerij G. Desmet nv

Veldstraat 7,
8930 Menen, Belgium



has been assessed and certified as meeting the requirements of

FSC® Chain-of-Custody

The company was assessed against the following standards:
FSC-STD-40-003 V2-1 Chain of Custody Certification of Multiple Sites – November 2014
FSC-STD-40-004 Version 3.0 FSC Standard for Chain of Custody Certification – April 2017
FSC-STD-40-005 V3-1 Requirements for Sourcing FSC® Controlled Wood – February 2017
FSC-STD-50-001 Requirements for use of the FSC trademarks by Certificate Holders

for the products detailed in the scope below

This certificate is valid from 22 February 2019 until 8 February 2024
and remains valid subject to satisfactory surveillance audits.

Re-certification audit due 60 days prior to expiry date.

Issue 6. Certified since January 2003.

SGS Ref # BE12/223574825

This is multi site scheme.

Additional site details are listed on the subsequent page.

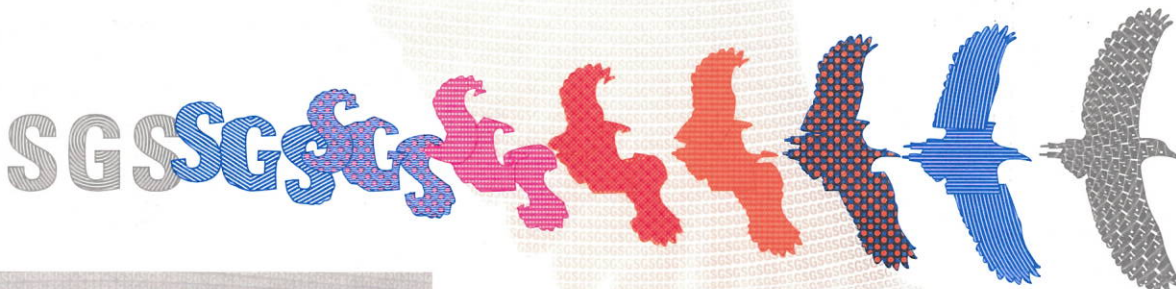
Authorised by

SGS Société Générale de Surveillance SA
Technoparkstrasse 1 8005 Zurich Switzerland
t +41 (0)44 445-16-80 f +41 (0)44 445-16-88 www.sgs.com



The mark of
responsible forestry

The validity of this certificate shall be verified on <http://info.fsc.org/>
For the full list of product groups covered by the certificate see <http://info.fsc.org/>
This certificate itself does not constitute evidence that a particular product supplied by the certificate holder is FSC-certified [or FSC Controlled Wood].
Products offered, shipped or sold by the certificate holder can only be considered covered by the scope of this certificate when the required FSC claim
is clearly stated on sales and delivery documents. This certificate remains the property of SGS.
The certificate and all copies or reproductions shall be returned or destroyed if requested by SGS.



Houtbuigerij G. Desmet nv

Chain-of-Custody



Issue 6

Detailed scope

- Purchase and storage of FSC 100% and Controlled logs, production and sales of FSC Mix and FSC Controlled Wood peeled veneer sheets (Credit System).**
- Purchase of FSC 100%, FSC Mix and FSC Controlled Wood peeled veneer, FSC 100% sliced veneer and FSC Mix paper, manufacturing and sales of FSC Mix pressure-formed plywood furniture parts (Credit System).**
- Purchase of FSC 100% logs, production and sales of FSC 100% pressure-formed solid wood furniture parts (Transfer System).**

The covered products and processes are performed by the network of sites, and not necessarily by each of them.

Additional facilities

Detaform NV
Veldstraat 7, 8930 Menen, Belgium

SC Rombel SRL
Strada Dozsa Gyorgy 87, 455100 Cehu Silvaniei, Romania



The mark of
responsible forestry

